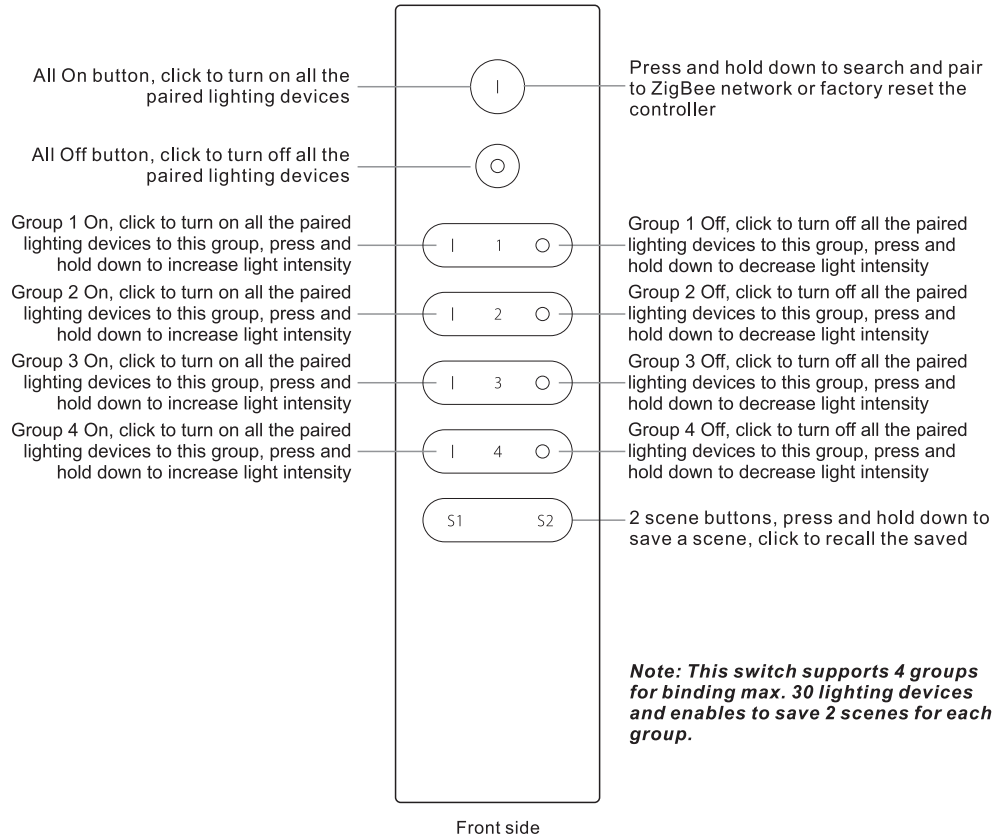


ZigBee Wireless Dimmer Switch



Important: Read All Instructions Prior to Installation

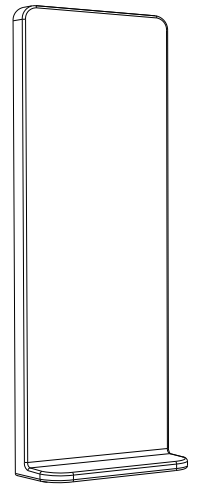
Function introduction



Note: Before the first use, please remove the protective film on the battery.

Product Data

Protocol	ZigBee 3.0
Operation Voltage	3VDC (CR2032)
Transmission Frequency	2.4GHz
Transmission Range (free field)	30m
Protection Type	IP20
Dimming Range	0.1%-100%
Dimension	150x38.6x12mm
Protection Grade	IP20



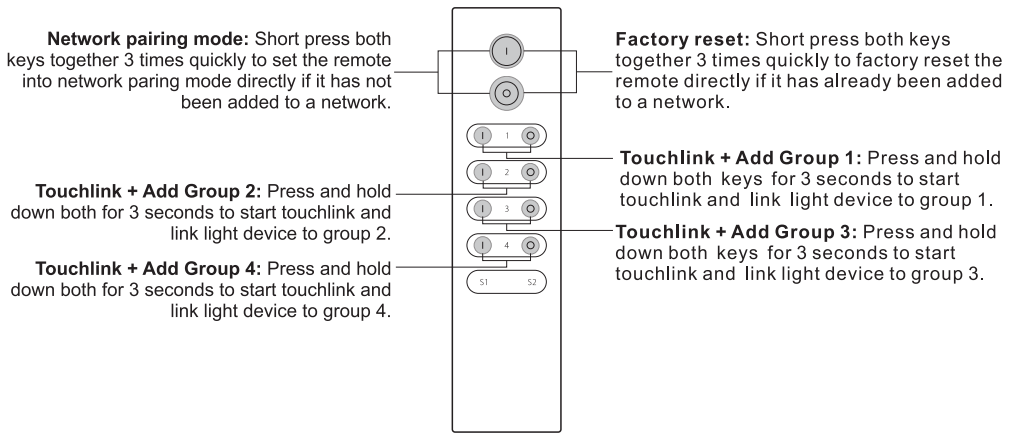
Magnetic Bracket

- ZigBee dimmer switch based on ZigBee 3.0
- Enables to pair ZigBee lighting devices via touchlink commissioning without coordinator
- Supports find and bind mode to pair with ZigBee lighting devices in the same network
- Supports 4 groups for binding max. 30 lighting devices
- 2.4 GHz global operation
- Long battery life mesh technology
- Transmission range up to 30m
- Compatible with universal ZigBee Gateway products
- Compatible with universal single color ZigBee lighting devices

Safety & Warnings

- This device contains a button lithium battery that shall be stored and disposed properly.
- DO NOT expose the device to moisture.

Quick Start (Simplified Operations Compared to Standard Operations in "Operation" part)



ZigBee Clusters Supported by This Remote Are As Follows:

Input clusters:

- Basic
- Power Configuration
- Identify
- Diagnostics

Output clusters:

- Identify
- Scenes
- Group
- On/off
- Level control
- Ota

Operation

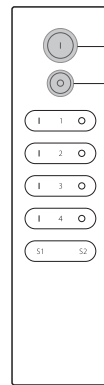
1. This ZigBee Dim remote is a wireless transmitter that communicates with a variety of ZigBee compatible systems. This transmitter sends wireless radio signals that are used to remotely control a compatible system.

2. This ZigBee remote supports 4 groups for binding max. 30 lighting devices and enables to control single color ZigBee lighting devices.

3. Zigbee Network Pairing through Coordinator or Hub (Added to a Zigbee Network)

Step 1: Remove the remote from previous zigbee network if it has already been added to it, otherwise pairing will fail. Please refer to the part "Factory Reset Manually".

Step 2: From your zigbee controller or hub interface, choose to add device or accessory and enter Pairing mode as instructed by the controller.

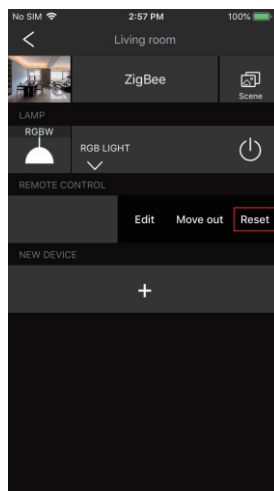


Step 3: Press and hold down until LED indicator turns on.

Step 4: Immediately short press to search nearby network, indicator flashes every 1 second, 20 seconds timeout if there is no network. Indicator will then blink 5 times quickly for successful pairing.

Note: 1) After pairing successfully, the remote information will appear on the controller or hub interface.
2) No remote information will appear on the hub interface if pairing to some Zigbee hubs.

4. Removed from a Zigbee Network through Coordinator or Hub Interface



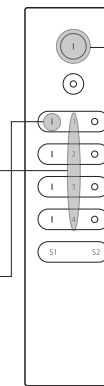
From your ZigBee controller or hub interface, choose to delete or reset the remote as instructed, indicator flashes 3 times quickly to indicate successful removing.

5. TouchLink to a Zigbee Lighting Device

Step 1: Set the zigbee lighting device to start TouchLink commissioning, please refer to its manual to learn how.

Step 3: Short press ON button I of group 1/2/3/4 to choose a group that you would like to pair the device to.

Step 5: Short press to start TouchLink pairing procedure of the remote. LED indicator will flash fast for 3s to start TouchLink and then flash 6 times slowly to indicate successful pairing to the device.



Step 2: Bring the remote within 10cm of the lighting device.

Step 4: Press and hold down until LED indicator turns on.

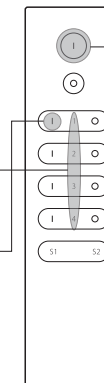
Note: 1) Directly TouchLink (both not added to a ZigBee network), each remote can link with 30 devices.
2) TouchLink after both added to a ZigBee network, each remote can link with max. 30 devices.
3) To control by both zigbee hub and remote, add remote and device to network then TouchLink.
4) After TouchLink, the remote can control the linked lighting devices.

6. Remove a Touchlink Paired ZigBee Lighting Device

Step 1: Set the Touchlink paired zigbee device to start TouchLink commissioning, please refer to its manual to learn how.

Step 3: Short press ON button I of group 1/2/3/4 to choose a group that the device was linked to.

Step 5: Immediately short press twice to start TouchLink removing of the remote. LED indicator flashes fast for 3S, then flash 6 times slowly to indicate successful removing.



Step 2: Bring the remote within 10cm of the lighting device.

Step 4: Press and hold down until LED indicator turns on.

7. Factory Reset Manually

Step 1: Press and hold down until LED indicator turns on.

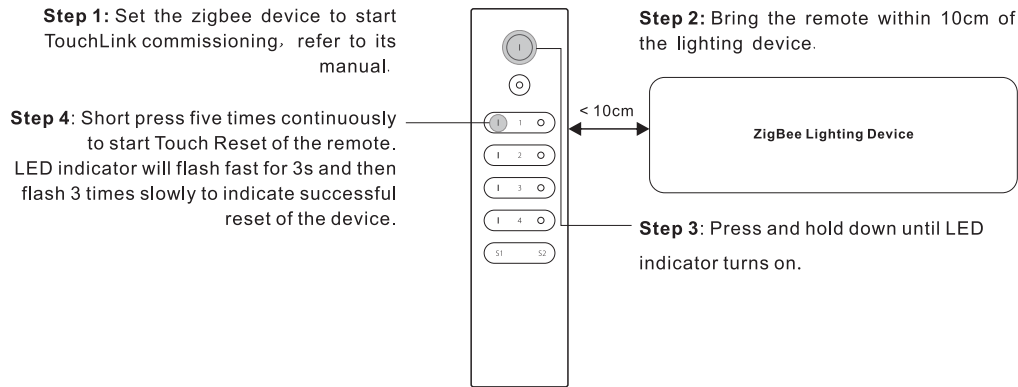
Step 2: Immediately short press 5 times continuously, indicator flashes 3 times quickly to indicate successful reset.

Note: All configuration parameters will be reset after the remote is reset or removed from the network.



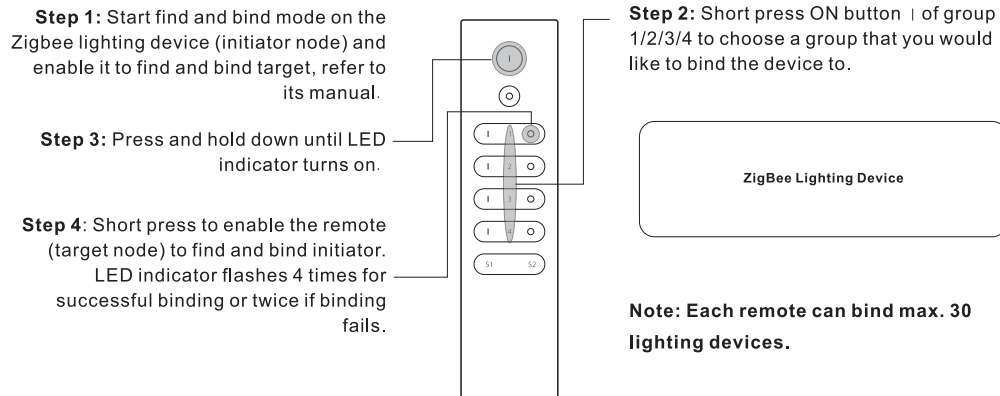
8. Factory Reset a Lighting Device (Touch Reset)

Note: the device shall be added to a network, the remote added to the same one or not added to any network.

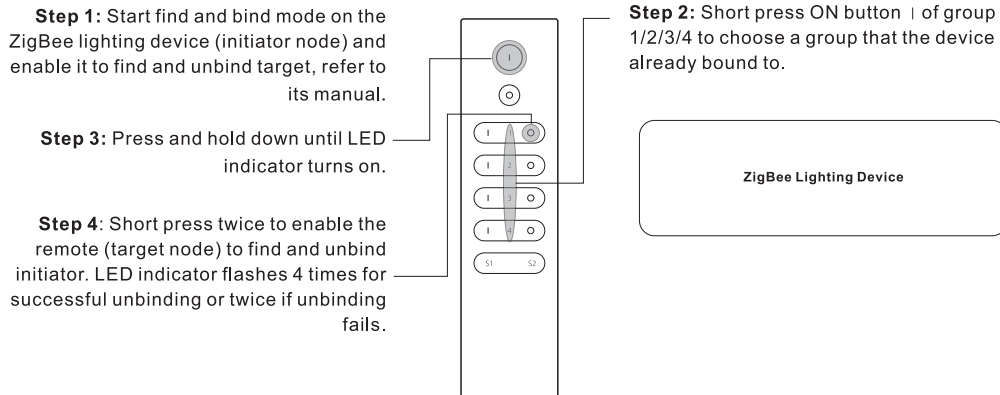


9. Find and Bind a Zigbee Lighting Device

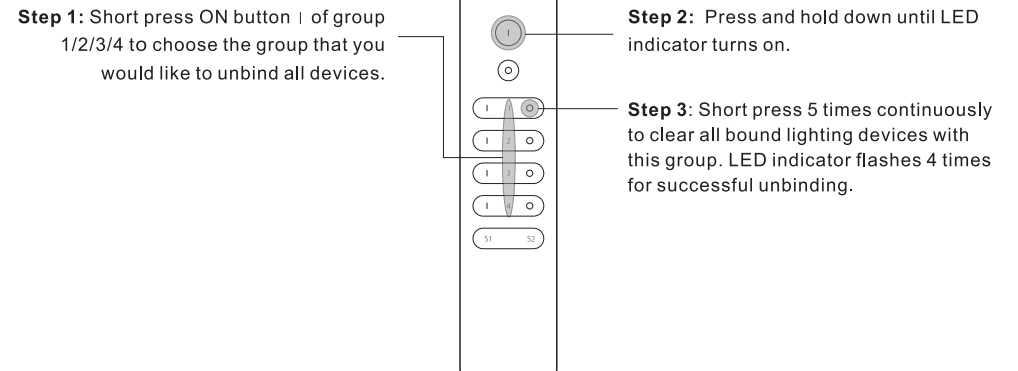
Note: Make sure the device and remote already added to the same zigbee network.



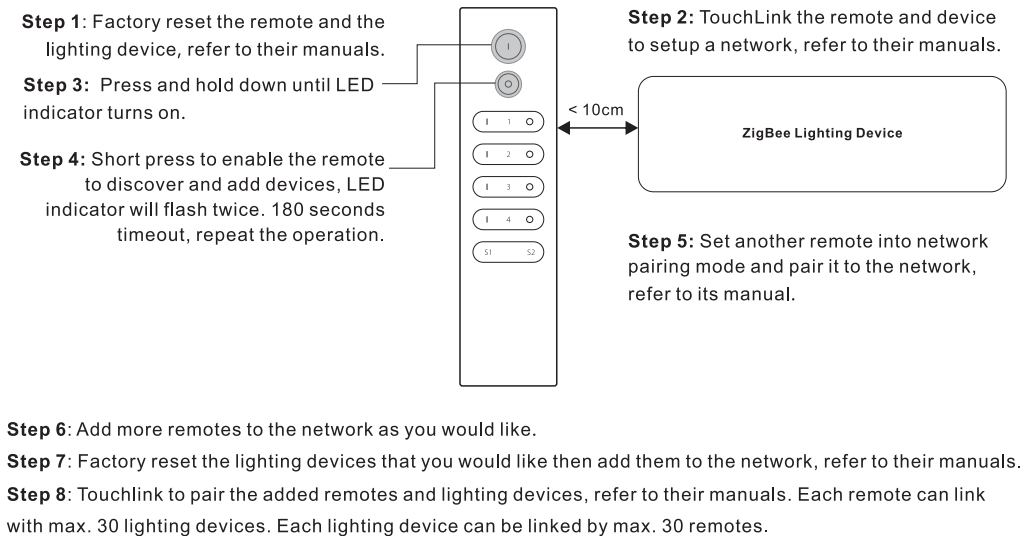
10. Find and Unbind a Zigbee Lighting Device



11. Clear All Find and Bind Mode Paired Lighting Devices of a Group

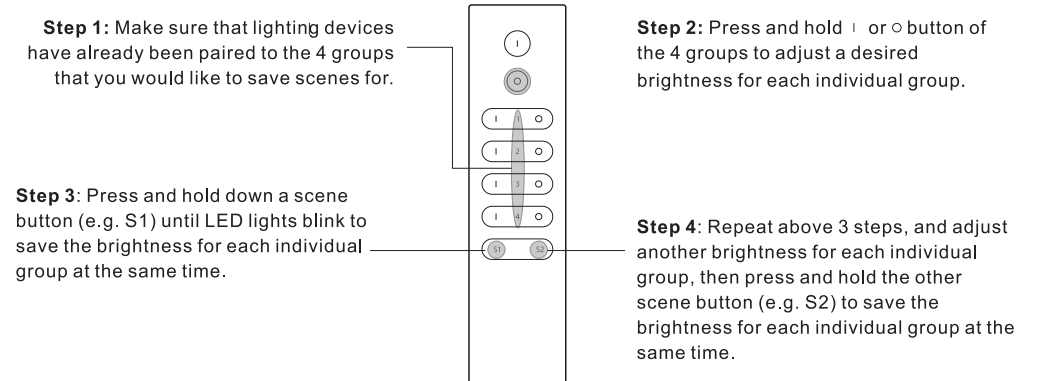


12. Setup a Network & Add Devices to the Network (No Coordinator or Hub Required)



13. How to Save and Recall Scenes

1) Save Scenes



2) Recall the Saved Scenes

Step 1: Short press button S1/S2 to recall a saved scene for each individual channel at the same time.

14. OTA



The remote supports firmware updating through OTA, and will acquire new firmware from zigbee controller or hub every 10 minutes automatically.

15. How to Check Whether the Remote Belongs to a Network or not

Activate the remote by clicking All On/Off button (indicator on), then short press any other buttons except group buttons, indicator blinking 3 times means the remote does not belong to any network, blinking once or twice means it has already been added to a network.

16. Battery Power Monitor Function


The remote will report battery power value to the coordinator under following situations:

- When powered on.
- When short pressing both  and  buttons of group 1 simultaneously.
- When operating the switch to send data packets (over 4 hours since last operation).
- When added to the network by a coordinator.

Battery Warnings & Safty

Warnings and Statements:

This product contains a CR Coin Cell Lithium Battery and meets the requirements of the **16 CFR Part 1263**. For your safety and to ensure proper operation, please carefully read and understand the following warnings and statements.

⚠ WARNING	
<ul style="list-style-type: none">• INGESTION HAZARD: This product contains a button cell or coin battery.• DEATH or serious injury can occur if ingested.• A swallowed button cell or coin battery can cause Internal Chemical Burns in as little as 2 hours.• KEEP new and used batteries OUT OF REACH of CHILDREN• Seek immediate medical attention if a battery is suspected to be swallowed or inserted inside any part of the body.	

Statements:

- INDOOR USE ONLY
- Remove and immediately recycle or dispose of used batteries according to local regulations and keep away from children. Do NOT dispose of batteries in household trash or incinerate.
- Even used batteries may cause severe injury or death.
- Call a local poison control center for treatment information.
- Do not install any battery other than CR2032 or its equivalent.
- Ensure the CR2032 operates at the nominal battery voltage (3VDC).
- Non-rechargeable batteries are not to be recharged.
- Do not force discharge, recharge, disassemble, heat above (manufacturer's specified temperature rating) or incinerate. Doing so may result in injury due to venting, leakage or explosion resulting in chemical burns.
- Ensure the batteries are installed correctly according to polarity (+ and -).
- Do not mix old and new batteries, different brands or types of batteries, such as alkaline, carbon-zinc, or rechargeable batteries.
- Remove and immediately recycle or dispose of batteries from equipment not used for an extended period of time according to local regulations.
- Always completely secure the battery compartment. If the battery compartment does not close securely, stop using the product, remove the batteries, and keep them away from children.

- If the battery leaks, do not touch or smell it, wipe the leakage from the battery compartment, and then replace the battery with a new one.
- If a battery leaks and the material contacts your skin or clothing, flush the exposed area thoroughly with running water. In case of eye contact, flush thoroughly with copious amounts of clean running water and seek immediate medical assistance.

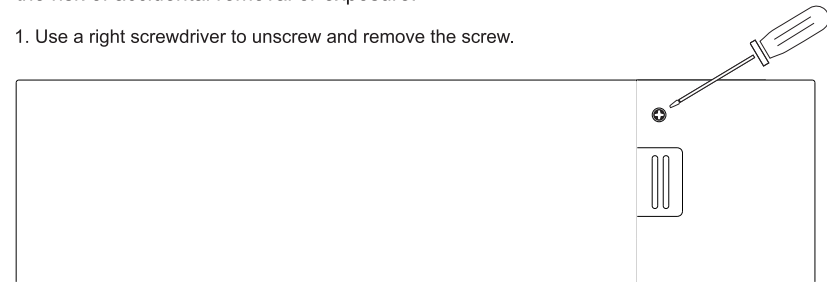
Battery information:

Battery	Battery Type	Operation Voltage	Diameter
CR2032	Button Cell	3VDC	20mm(0.787inch)

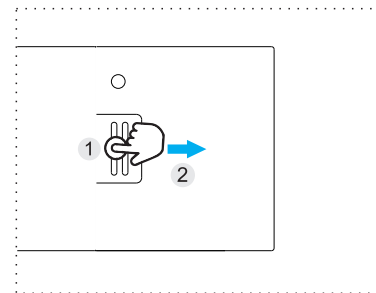
How to install or replace a battery:

This product is designed with a battery compartment that is secured to prevent unauthorized access, especially by children. This safety feature ensures that the battery remains safely enclosed, minimizing the risk of accidental removal or exposure.

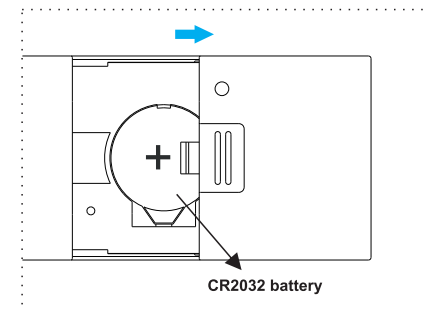
1. Use a right screwdriver to unscrew and remove the screw.




2. Press and hold down, then push the rib to unlock the battery compartment cap.



3. Pull out the cap, then take out the battery.



BATTERY	Description
+	 Note to distinguish between the + or - of the battery.
-	

4. Note to distinguish between the + or - of the battery, install the new battery in the battery compartment correctly, and push the compartment into the sensor, then check and make sure that the battery compartment got locked and secured.

Disposing of used batteries:

- When disposing of used batteries, please comply with governmental regulations or environmental public institutions' rules that apply in your country/area.
- Note and follow the **STATEMENTS** in **WARNINGS AND STATEMENTS**.